

Mobile registration

Quick Start Guide



1. Search the App Store or Google Play for MDLIVE.

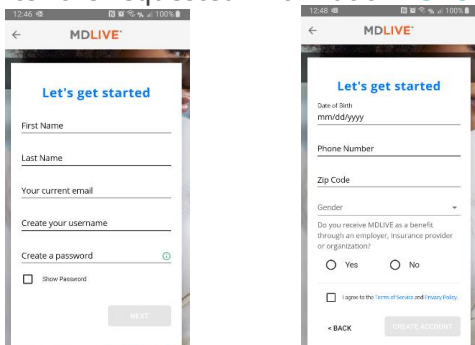
Download the MDLIVE App



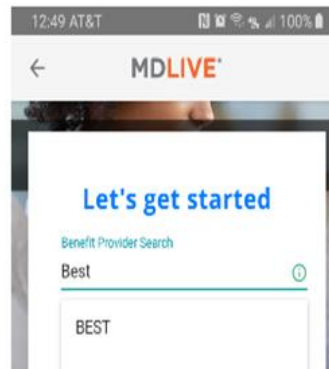
2. Click **Create Account** at the bottom of the screen



3. Enter the requested information. **Click Create Account.**



4. Enter your Benefit Provider (*Board of Education Self Funded Trust, BEST or D11*). Click **verify**.



5. Your information will be verified. Once verified, you can access your MDLIVE account

