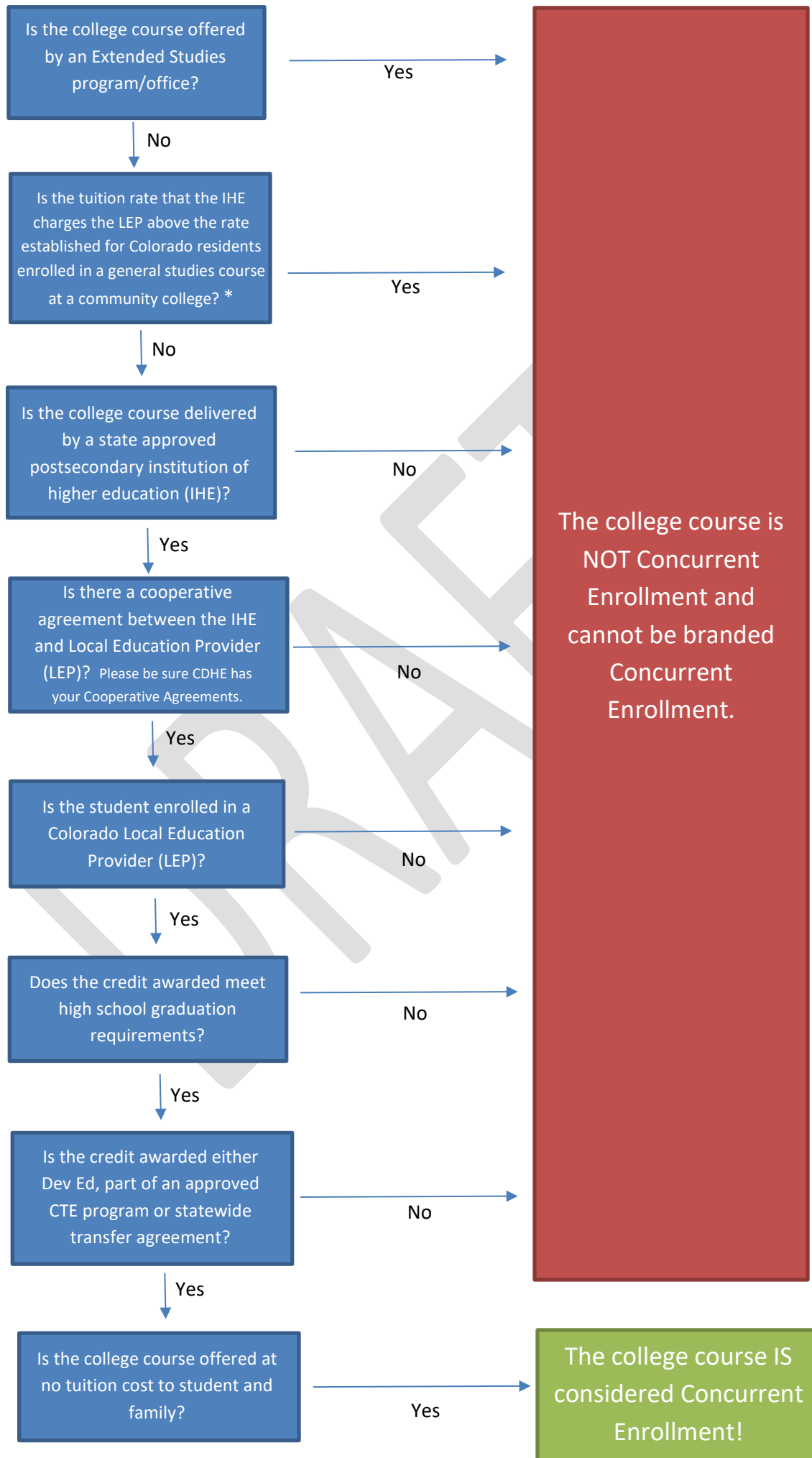


## Concurrent Enrollment Requirements Flowchart

(Consult C.R.S. 22-35-102 for all requirements and details. Below flowchart incorporates changes from [SB19-176](#))

For additional detail for each item below, please see page 2.



**CE Does NOT Include a student's simultaneous enrollment in** (see 22-35-103 (6)(b)):

- **Secondary CTE, AP or IB**
- **Early College Postsecondary courses**
- **P-tech college courses**
- **Other courses that do not meet C.R.S. definition requirements**
- **Courses offered through an institution's Extended Studies program** (see 22-35-110 (1) and 23-1-109.5). For instance, courses that allow students to opt out of HS or college credit, once the course is completed, are not Concurrent Enrollment.

**\*The tuition rate that the IHE charges the LEP does not exceed the rate established for Colorado residents enrolled in a general studies course at a community college** (rate established by the state board for community colleges and occupational education) *except* for LEPs who are not in a community college's service area, in which case the tuition rate should not exceed the resident tuition rate of the nearest Colorado public IHE. (see 22-35-105 (3)(a)(I-II)).

**Is delivered via an Approved Postsecondary Institution of Higher Education (IHE)(see 22-35-103 (12) for the criteria):**

- A state university or college, community college, local district college, area technical college or a postsecondary career and technical education program
- An educational institution operating in this state that maintains a physical campus or instructional facility in Colorado, is accredited by a regional accrediting agency or association, is authorized by the department of higher education to do business in Colorado pursuant to section 23-2-103.3, C.R.S., among other requirements.

**LEP and IHE must enter into a Cooperative Agreement (see 22-35-104 (6)(a)).**

Details of what must be included in a Cooperative Agreement found in the sections below:

- Overall requirements- 22-35-104 (6)(b)(I-VIII)
- Financial provisions- 22-35-105 (3)(a)(I-II)
- Requirements for distribution of cooperative agreements- 22-35-104 (6)(c).
  - Per statute, ***be sure CDHE has a copy.***

**Student is enrolled in a Colorado Local Education Provider (LEP) (see 22-35-103(13) for full definition)** – an LEP is means a school district, board of cooperative services, district or institute charter school.

**Awards credit toward HS graduation (see 22-35-103 (6)(a)).** The qualified student must receive credit that applies to completion of high school graduation requirements. These requirements could be electives. In addition, if the LEP would typically count the course for graduation purposes (e.g. a student has completed the required science credits but enrolls in another CE science class), this is acceptable.

**Awards credit that is either Dev Ed (for seniors only), approved CTE program, part of an approved CTE program or part of statewide transfer agreement (including gtPathway/Degree with Designation/AA/AS) (see 22-35-103 (6)(a)).** Please check with your IHE.

**Is offered at no tuition cost to students or families (see 22-35-103 (6)(a)). Any course for which the student or parent is responsible for any portion of the tuition may not be called Concurrent Enrollment.** However, LEPs are authorized to request reimbursement from students and families if the student does not complete or receives a failing grade in the Concurrent Enrollment course (see 22-35-105 (4)(a-c)).